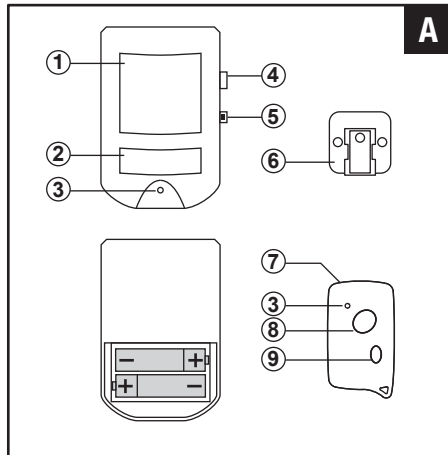


Controls

1. Motion Sensor
2. Alarm Speaker
3. Battery Low Indicator
4. On/Off Switch Button
5. Learning Code Button
6. Rotary Wall Mount Bracket
7. RF Keyfob
8. RF Keyfob 'On' Button
9. RF Keyfob 'Off' Button



Battery installation

Alarm unit

1. The battery compartment is accessed from the rear of the alarm unit by removing the back cover.
2. Insert two (2) 'AA' size batteries (not included) following the polarity A.
3. When the last battery is inserted the alarm will beep very loudly to indicate that the batteries are installed properly. If no beep sound, it means the batteries are not installed properly.
4. Re-place the back cover again.

The Battery Low LED will light when the batteries is needed to be replaced.

RF Key Fob

The key fob uses 1 piece A27 battery (included). If the low battery indicator is 'On', simply remove and replace with fresh battery.

Learning remote keyfob code to the alarm unit

After batteries installed, learn the Remote Keyfob code, press the Learn button on the Alarm unit and press the 'On' button of keyfob. The Alarm unit will beep 2 times when set. The Alarm is ready to use.

Note: The alarm unit will need to relearn the Remote keyfob code every time the batteries are replaced in either the alarm unit or the remote keyfob

Programming the alarm

Simply press 'On' or 'Off' button of RF key fob to arm or disarm the unit.

Installation

1. Place the alarm in the desired location, using rotary wall mount bracket provided.
2. Fix bracket to the wall using the screws supplied.

Please note that this alarm can also be used free standing.

Operation

When exiting from the protected area

Press the 'On' button of RF remote control at the distance of 10 meters, a confirmation tone will indicate that the alarm is armed and you have 30 seconds in which to vacate the area. After this time, if motion is detected then the alarm will sound.

The main unit can operate with 3 Key Fob.

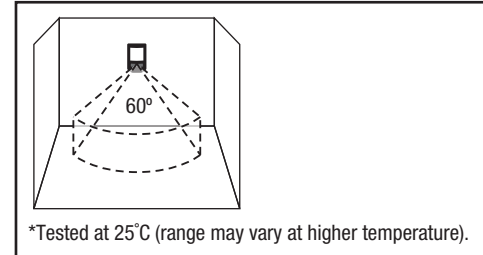
When entering the protected area

Simply press the 'Off' button of the RF remote control within the distance of 10 meters to disarm the unit. Please note that on entering the area, there is a short beep to indicate that motion has been detected and a 4 second delay before the alarm will sound to allow it to be disarmed.

Detection range

The motion detector of the alarm unit has a 6 meter (20ft) with approximate angles of 30° vertical and 60° horizontal.

Detection area



Care and maintenance

To clean the case, simply use a soft slightly damp cloth with water and wipe dry immediately.

Caution: Never use chemicals to clean the case, as they may cause damage to the plastic and cause the alarm not to function.

Troubleshooting

The unit does not sound when the batteries are installed

Ensure that the batteries are connected correctly according to the diagram in the battery compartment

The alarm does not arm

Ensure that the back plate of the alarm unit is secure to hold the batteries in place and that the red light comes on when the keypad buttons are pressed

The red light located in the middle of the alarm 4 is on

This is the low battery warning indicator light. The batteries need replacing

Battery precautions

When using this product follow these precautions at all times.

- Use only the appropriate size batteries
- Be sure to follow the correct polarity when installing the batteries as indicated in the battery compartment. Incorrect polarity may cause damage to the alarm.
- Do not mix different types of battery such as Alkaline and Carbon-zinc or old batteries with new.
- If the alarm is not used for long periods of time, remove the batteries to prevent damage or injury from possible battery leakage.
- Do not recharge batteries not intended to be recharged as they can overheat and rupture. (Always follow the manufacturer's directions.)

